

Synopsis:

The Elite MPX Aesthetic Workstation is a highly versatile system that allows you to perform multiple laser applications quickly and efficiently for patients of any skin type. The Elite MPX offers the most comprehensive range of hair removal applications available today; treatment of facial and leg veins; treatment of benign epidermal pigmented lesions such as age spots, sunspots and freckles; and improvement in the appearance of photo-aged skin.

This revolutionary technology combines three gold standard treatment modalities in one system: the Alexandrite (755nm) and Nd:YAG 1064 nm) and Intense Pulsed Light. The Elite MPX delivers high fluence from large spot sizes – ensuring deeper penetration, faster procedures and optimal results. Elite MPX also incorporates Cynosure's proprietary MultiPlex technology, which sequentially fires two wavelengths for more effective treatments than single-wavelength systems. The workstation also features a built-in Zimmer SmartCool(R) skin cooling system that is exclusive to Cynosure. Rather than requiring a separate cooling device or consumable cooling methods, Zimmer technology is integrated into a single compact module, saving precious office space and reducing treatment time.

Physician Testimonial:

"Cynosure's Elite MPX is a powerful and versatile system that enables clinicians to customize treatments for a broad range of skin types and conditions, including sun-damaged skin, pigmented lesions, dyschromia and rosacea. As practitioners, we are seeing a growing cultural diversity within our patient base, and I expect the Elite MPX will provide benefits across the spectrum of applications for these patients." -- Emil Tanghetti, M.D., Clinical Professor of Dermatology at the University of California, Davis and Director of The Center for Dermatology and Laser Surgery, Sacramento, California.

Candela GentleMax vs. Cynosure Elite MPX



Candela GentleMax



Cynosure Elite MPX

Elite MPX Provides More Wavelength Options:

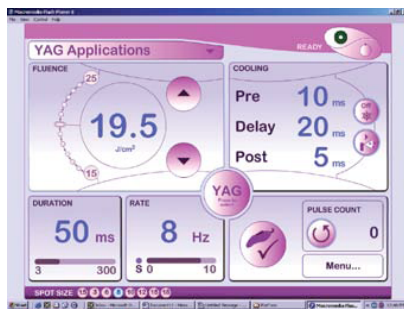
- Both systems offer Alexandrite (755nm) and Nd:YAG 1064 nm) wavelengths. However, the Elite MPX offers the ability to sequentially fire both wavelengths in "Multiplex Mode".
- **The MultiPlex Advantage:** When treating hair and veins, Multiplex mode allows for more efficacious treatment using lower power fluences by taking advantage of the chromophore absorption of both wavelengths. In turn, lower fluences equal result in less discomfort in the treatment of veins and hair, thus addressing the #1 concern from patients.
- **What physicians are saying about Multiplex:** "
- Candela claims that the GentleMax is the most powerful system available based on a spec of 600 J/cm² and 26,400 watts. This specification is not relevant to therapeutic doses and would not be used in patient treatment. Cynosure does not allow for unsafe energy levels for patient treatment.
- When treating diffused redness, pigment and sun damage, the gold standard treatment is Intense Pulsed Light. The XPL² on the Elite MPX provides 3 interchangeable filters to selectively treat a range of pigment, sebaceous, and vascular conditions.

Elite MPX – Integrated Cooling System and Sleek, Compact Design:

- The Elite MPX has a smaller foot-print and weighs roughly 50 lbs lighter.
- Cooling is a major factor of comfort and safety during laser procedures. The Elite MPX system incorporates an air cooling system inside, cooperatively designed with Zimmer, the leader in air cooling. Integrated air cooling has proven more effective than the cryogen spray method of Candela. In addition to the risk of skin toxicity and the need for higher fluences to penetrate through the chemical, it adds a costly consumable priced around \$70 each.

Elite MPX - Ease of Use:

- One of the most important qualities of a laser, aside from the specs, is ease of use. With the Elite MPX you won't have to change between 3 cumbersome fibers when using different hand pieces. One fiber supports each of the 8 spot sizes available. This feature allows for fast setup time, less parts to replace, and reduces the need for storage space.
- The Elite MPX incorporates the smallest interchangeable hand pieces on the market which are half the size the GentleMax hand pieces. This is very important when administering treatment to large areas and greatly reduces user fatigue.
- A completely new software system runs the graphically enhanced user interface, which makes its operation simple and easy. Elite MPX uses a user-friendly Microsoft Windows XP operating system. New applications can be downloaded swiftly with an easy software update, and the potential to store data, media, and even sync with electronic medical records is possible. The GentleMax does not offer this adaptable software application offered by Windows XP.



GentleMax User Interface



Elite MPX Windows XP User Interface

Cynosure Service and Support

- Cynosure is a recognized industry leader with technology that is strongly supported by sophisticated peer-reviewed clinical research.
- 24 / 7 Customer Service - Personalized on-site tech support is provided by our team of experts.
- Cynosure was awarded "Best Customer Service" by Aesthetic Trends and Technologies Magazine.

Candela GentleMax vs. Cynosure Elite MPX – Specification Comparison:



Specifications

Laser Type	Nd:YAG + Alexandrite	Nd:YAG + Alexandrite + Multiplex + IPL
Wavelength	1064 nm + 755 nm	1064 nm + 755 nm + 530-1200nm
Repetition	Up to 10 Hz	Up to 10 Hz, Up to 1Hz
Pulse Duration	0.25 – 300 ms	0.5 – 300 ms
Spot Sizes	1.5, 3, 6, 8, 10, 12, 15, 18 mm	1.5, 3, 5, 7, 10, 12, 15, 18mm
Fluence Range	Up to 600 J/cm ²	Up to 600 J/cm ²
Fibers Necessary for Full Usage	3	1
Dimensions	45" H x 26.5" W x 38" D	46" H x 17.25" W x 32.4" D
Weight	342 lbs	298 lbs
Cooling	Cryogen Spray	Built-In Zimmer Air Cooler
Consumables	Yes	No
Upgradeable	No	Yes
Operating System	Basic Graphic User Interface (Bi-Color)	Advanced Full Color GUI by Windows XP
Digital Hard Drive Storage on Unit	No	Yes
Multiplex Capability	No	Yes
J/cm ² on 18 mm Spot Size 755 nm	20	22